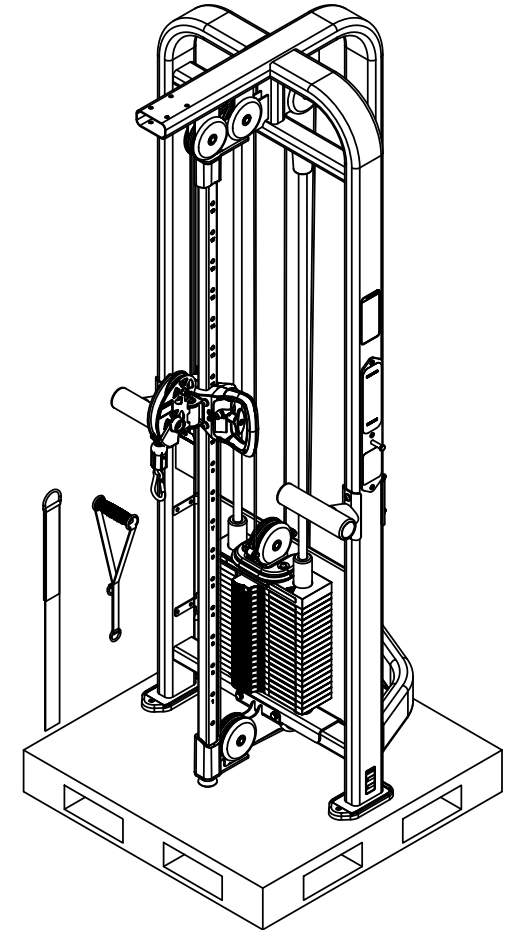
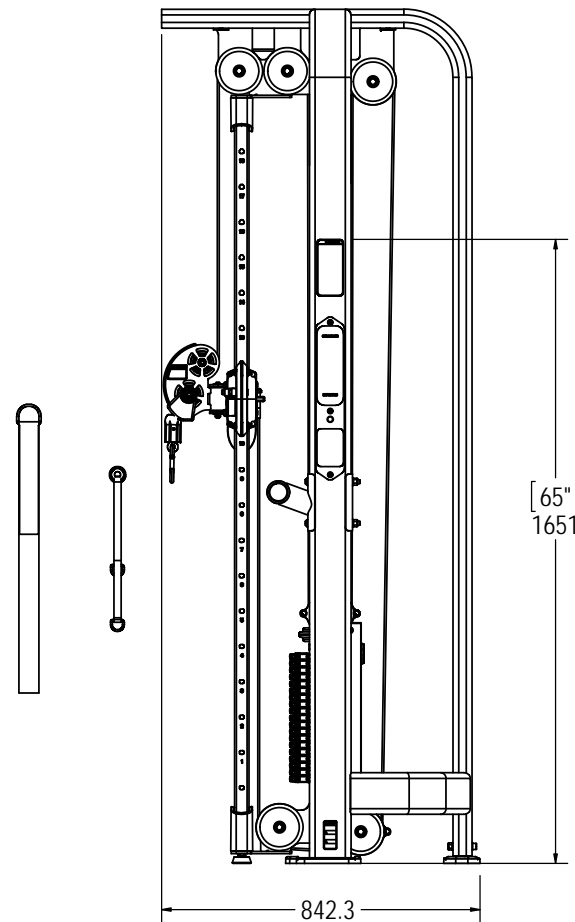
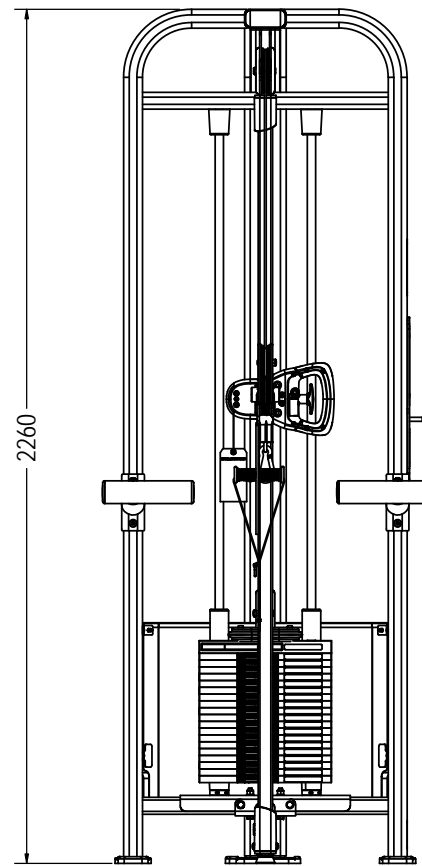
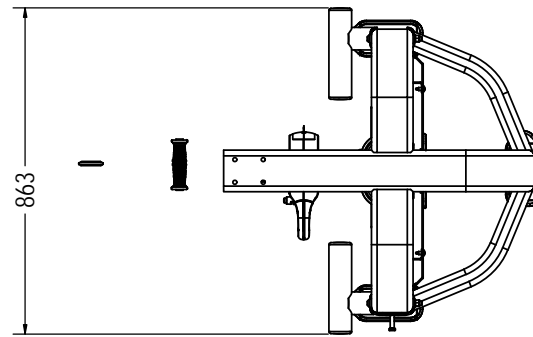


NOTES:

1. COLOR DICTATED BY SALES ORDER. SEE SOP 622-200-103 FOR PART COLOR DESIGNATOR.
2. ASSEMBLE AND INSPECT PER SOP 620-7918
3. PN: 731-5979,(PALLET) NOT SHOWN IN BOM, FOR PACKAGING REF. ONLY.
4. MOUNT SECURELY TO PALLET
5. PACKAGE ITEMS IN A MANNER THAT THEY WILL NOT BE DAMAGED DURING SHIPPING/STORAGE.
6. LABEL PACKAGE TO INCLUDE
 - a. PO NUMBER AND DATE
 - b. ASSEMBLY NUMBER
 - c. BAR CODE OF ASSEMBLY NUMBER (CODE 128)
 - d. ASSEMBLY DESCRIPTION
 - e. ASSEMBLY REVISION
 - f. WEIGHT (LBS / KGs)

REVISION HISTORY				
REV	DATE	DESCRIPTION	ECO	BY
A	9/23/16	DOCUMENT RELEASE	15560	RLH
B	4/13/2017	IS 731-8027 WAS 731-7523, IS 731-8075 WAS 731-4764, ADD 731-8118	15640	RLH
C	5/4/2017	IS: 731-8120 (1) WAS: 731-3159 (1), IS: 731-8117 (1) WAS: 731-2445 (1)	15666	AW



DOCUMENT STATUS:

NOTICE OF PROPRIETARY INFORMATION
THIS DOCUMENT SHALL NOT BE REPRODUCED NOR SHALL THE INFORMATION CONTAINED HEREIN BE USED BY OR DISCLOSED TO OTHER EXCEPT AS EXPRESSLY AUTHORIZED BY CORE HEALTH & FITNESS, LLC.

CLASS OF WORK	UNLESS OTHERWISE SPECIFIED DIMS ARE IN mm. TOLERANCES FOR MEASURE OF LENGTH ARE:							ANGLES = ±2°		
	0.5 to 3	> 3 to 6	> 6 to 30	> 30 to 120	> 120 to 400	> 400 to 1000	> 1000 to 2000	> 2000		
FINE	±0.05	±0.05	±0.1	±0.15	±0.2	±0.3	±0.5	----		
MEDIUM X	±0.1	±0.1	±0.2	±0.3	±0.5	±0.8	±1.2	±2		
COARSE	±0.2	±0.3	±0.5	±0.8	±1.2	±2	±3	±4		
VERY COARSE	----	±0.5	±1	±1.5	±2.5	±4	±6	±8		

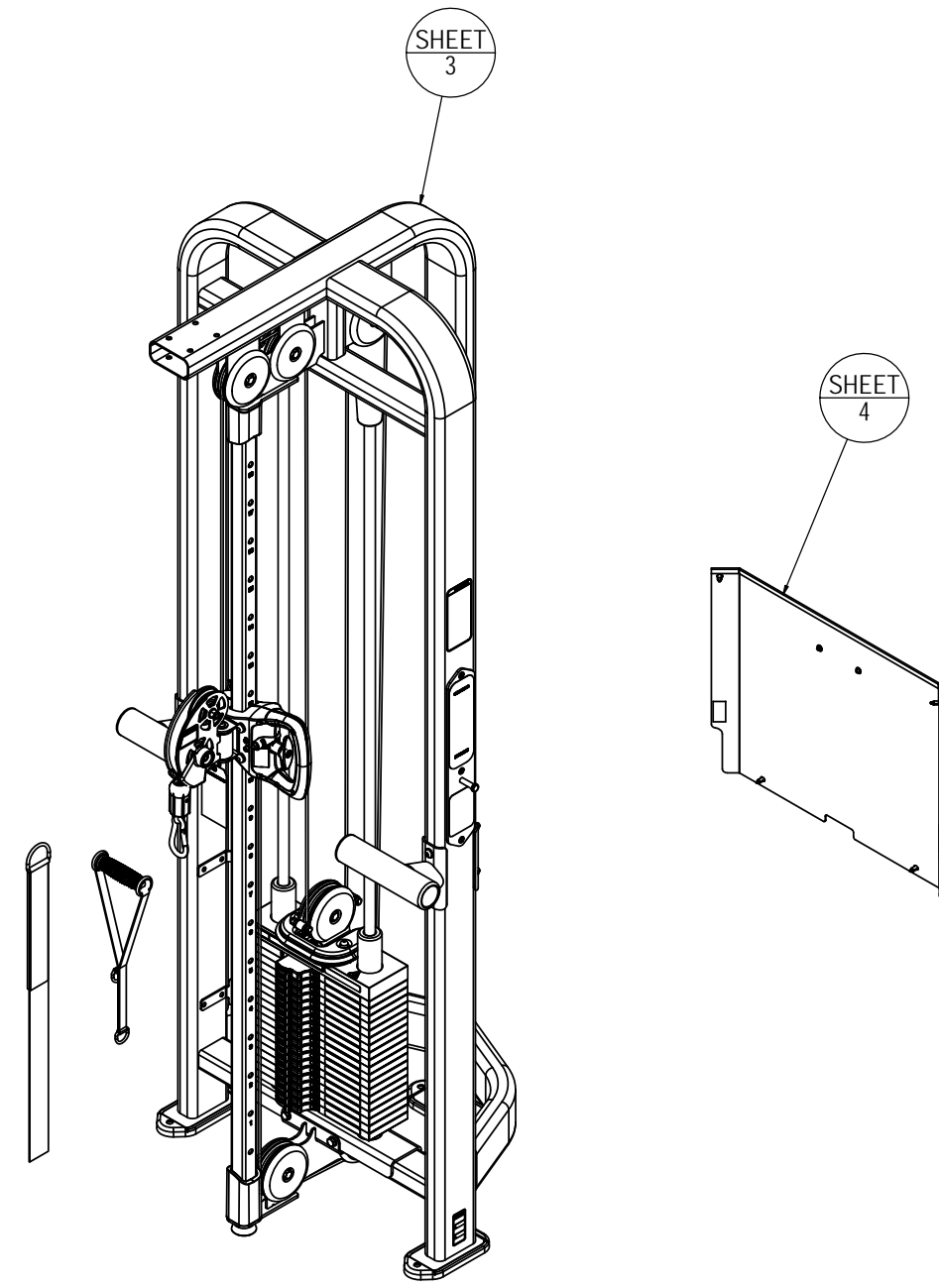
MATERIAL SEE BOM	THIRD ANGLE PROJECTION 	
FINISH SEE NOTES	DRAWN	DATE
	INITIAL	DATE
	RLH	9/12/16
	CHECKED	
	APPROVED	
VENDOR: LAND AMERICA	P/N:	
	U.O.M.	MM

CORE HEALTH & FITNESS, LLC

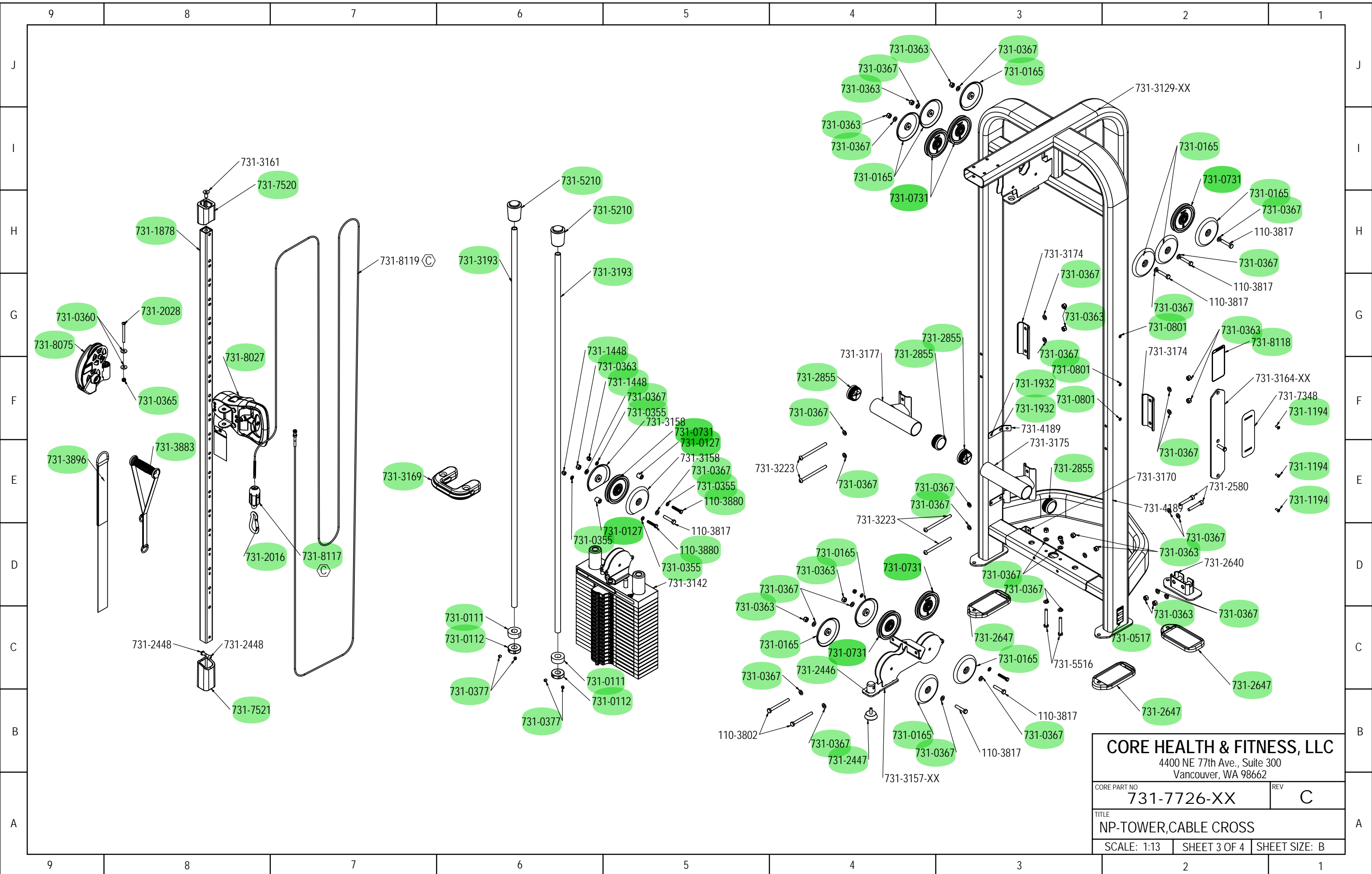
4400 NE 77th Ave., Suite 300
Vancouver, WA 98662

CORE PART NO	REV
731-7726-XX	C
TITLE	
NP-TOWER,CABLE CROSS	
SCALE: 1:20	SHEET 1 OF 4
SHEET SIZE: B	

9	8	7	6	5	4	3	2	1	
	ITEM NO.	PART NUMBER	DESCRIPTION	QTY.					
J	1	110-3802	SCREW,M10x1.5,105mm,HHC,HE,AS,ZC,GR12.9	2					J
	2	110-3817	SCREW,M10x1.5,50MM,HHC,HE,AS,12.9,ZC,PT	6					
	3	110-3880	SCREW,M8x1.25,45mm,HHC,HE,AS,ZC,GR12.9	3					
	4	731-0111	STOP,BUMPER,WGT PLT	2					
	5	731-0112	SET COLLAR,GUIDE ROD,Ø22.4mm	2					
	6	731-0127	RACE,WEAR SLEEVE,CABLE	3					
	7	731-0165	CAP,PLASTIC,PULLEY,Ø120mm	10					
I	8	731-0355	WASHER,PLAIN,M8,NARROW	6					I
	9	731-0360	WASHER,PLAIN,M8,LARGE,GRADE A	2					
	10	731-0363	NUT,M10X1.5,NYLOC	16					
	11	731-0365	NUT,M8 X 1.25,NYLOC JAM	2					
	12	731-0367	WASHER,PLAIN,M10	32					
	13	731-0377	SCREW,M10 X 1.5,12mm,FPS,HK	4					
	14	731-0381	HOUSING,LOGO,STARTRAC	1					
H	15	731-0517	STICKER, WARNING, BOLT DOWN	1					H
	16	731-0588	RETAINING RING,EXT., 1/4" SHAFT	2					
	17	731-0731	ASSY,PULLEY,Ø120MM,CABLE	6					
	18	731-0801	NUT,RIVET,M6	3					
	19	731-1194	SCREW,M6 x 1.0,16mm,FHM,HK	3					
	20	731-1448	NUT,M8x1.25,ACORN	2					
G	21	731-1878	WELD,ADJ. GUIDE TUBE, DAP	1					G
	22	731-1932	RIVET,5MM	12					
	23	731-1933	RIVET, PUSH TYPE	4					
	24	731-2016	CLIP,CARABINEER,3/8 IN.,CLP	1					
	25	731-2028	SCREW,M8 X 1.25,90mm,BHC,HK	1					
	26	731-2223	VELCRO LOOP WITH ADHESIVE	2					
	27	731-2224	VELCRO HOOK WITH ADHESIVE	2					
F	28	731-8117	ASSY,SWIVEL,HANDLE,DAP	1					F
	29	731-2446	NUT,3/8 -16,JAM	1					
	30	731-2447	FOOT,ADJ,3/8-16	1					
	31	731-2448	SCREW,M10x1.5,16MM,BHC,HK,AS,GR-12.9,NKL	2					
	32	731-2580	M10 X 65MM HSHCS	2					
	33	731-2640	WELD,FOOT,MAX RACK,RH	1					
	34	731-2647	FOOT,LONG,LEVERAGE	3					
E	35	731-2855	CAP END 60MM TUBE	4					E
	36	731-3129-XX	WELDMENT,SINGLE STATION TOWER	1					
	37	731-3142	ASSY,WGT STK,100KG,CC	1					
	38	731-3157-XX	WELD,POST MOUNT,LOW	1					
	39	731-3158	CAP,PULLEY,MODIFIED	2					
	40	731-8119	ASSY,CABLE,CC, 1/8 IN	1					
D	41	731-3161	SCREW,M12 X 1.75,25mm,FHM,HK,AS,GR-10.9,NKL	1					D
	42	731-3163-XX	SHROUD,SINGLE TOWER	1					
	43	731-3164-XX	WELD,PLACARD,MS	1					
	44	731-3169	PLATE,ADD ON WEIGHT	1					
	45	731-3170	BRKT,SHROUD,LOW,MS	2					
	46	731-3171	BRKT,MS,HOOK N LOOP	2					
	47	731-3174	BRKT, BALET BAR MNT	2					
C	48	731-3175	WELD,BALET BAR,R,CC	1					C
	49	731-3177	WELD,BALET BAR,L,CC	1					
	50	731-3193	GUIDE ROD,Ø22MM X 1811MM	2					
	51	731-3223	SCREW,M10 X 1.5,140MM,BHC,HK, CS, NP	4					
	52	731-3883	ASSY,HANDLE,STIRRUP,STARTRAC,SMALL	1					
	53	731-3896	ASSY,STRAP,ANKLE	1					
	54	731-4189	BRKT,SHROUD MOUNT,MS	2					
B	55	731-4439	STICKER,ADD ON, MULTI STATION	1					B
	56	731-5210	CAP,GUIDE ROD, WITH STOP	2					
	57	731-5516	SCREW,M10x1.5,75mm,HHC,HE,AS,12.9,ZC	2					
	58	731-7311	STICKER,NAUTILUS,DECO,45MMX191MM	1					
	59	731-7348	PLACARD,CABLE CROSS, NAU	1					
	60	731-7520	STOP,BUMPER,TOP,DAP/MS	1					
	61	731-7521	STOP,BUMPER,BOTTOM,DAP/MS	1					
A	62	731-8027	ASSY,MECH,PULLEY,ADJ,MS,w/2nd PIN	1					A
	63	731-8075	ASSY,SWIVEL,PULLEYS, MS/DAP	1					
	64	731-8118	STICKER,INSTRUCTIONS,TROLLEY	1					



CORE HEALTH & FITNESS, LLC		
4400 NE 77th Ave., Suite 300 Vancouver, WA 98662		
CORE PART NO	731-7726-XX	REV C
TITLE NP-TOWER,CABLE CROSS		
SCALE: 1:15	SHEET 2 OF 4	SHEET SIZE: B

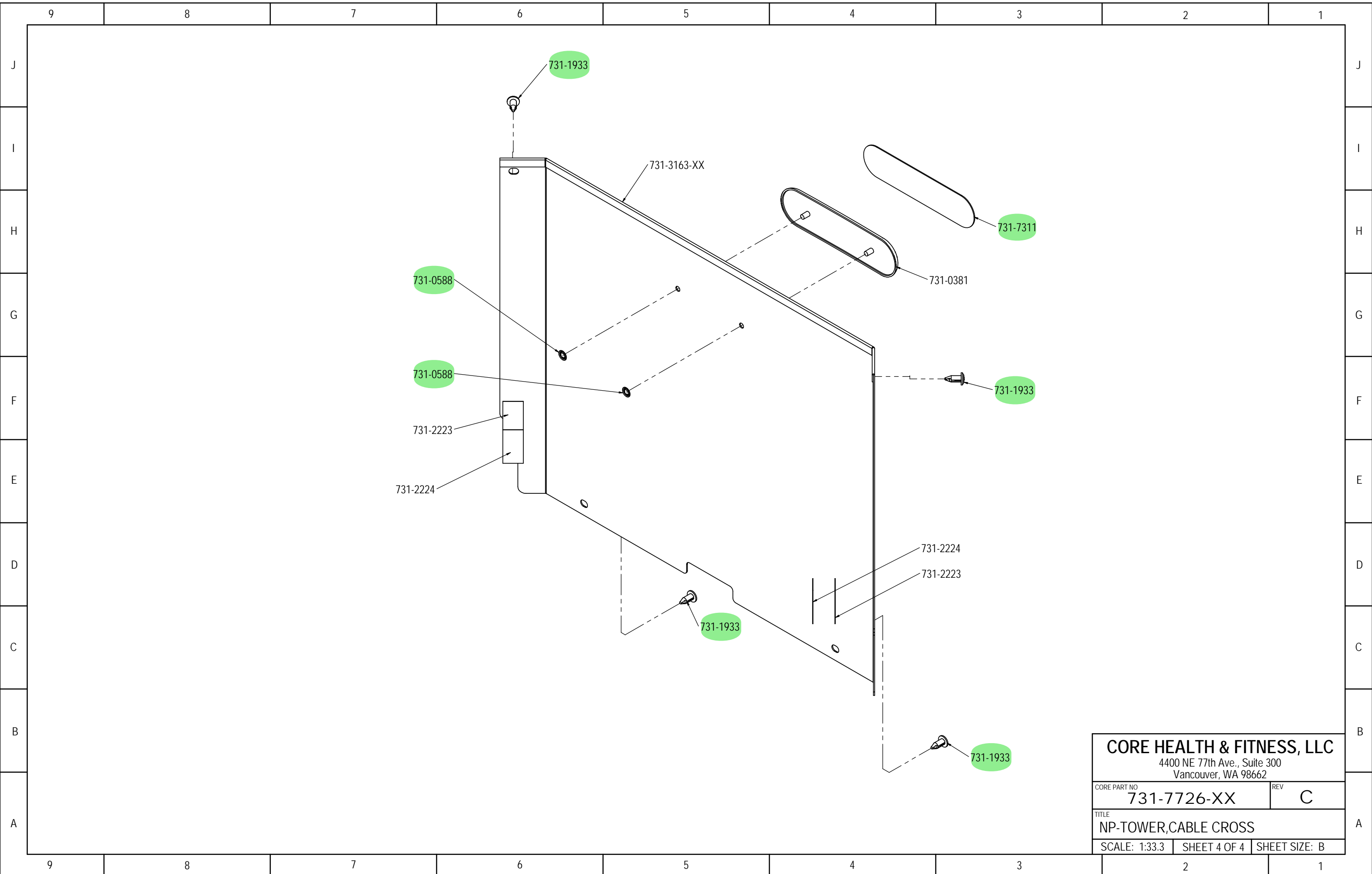


CORE HEALTH & FITNESS, LLC
 4400 NE 77th Ave., Suite 300
 Vancouver, WA 98662

CORE PART NO	REV
731-7726-XX	C

TITLE
NP-TOWER,CABLE CROSS

SCALE: 1:13	SHEET 3 OF 4	SHEET SIZE: B
-------------	--------------	---------------



CORE HEALTH & FITNESS, LLC
 4400 NE 77th Ave., Suite 300
 Vancouver, WA 98662

CORE PART NO	731-7726-XX	REV	C
--------------	-------------	-----	---

TITLE
 NP-TOWER,CABLE CROSS

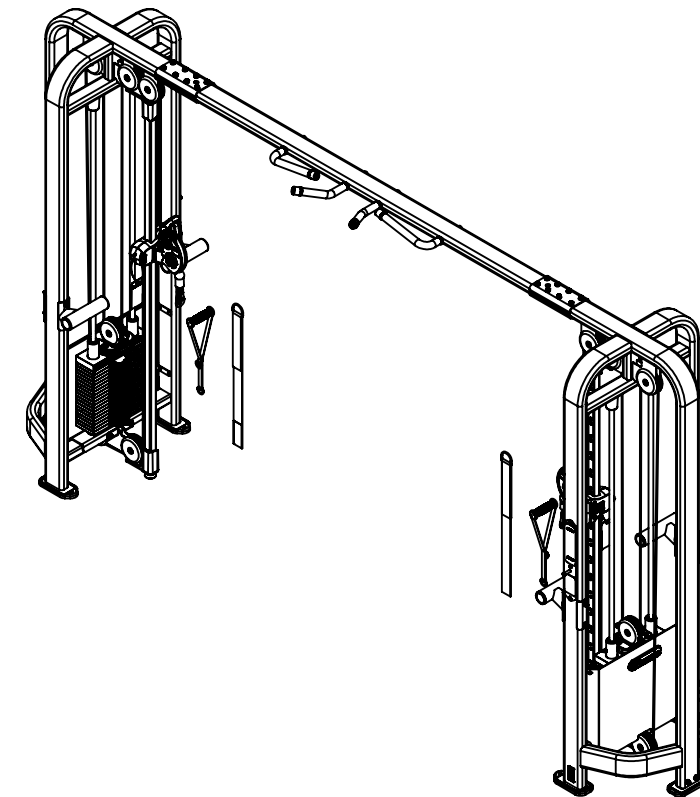
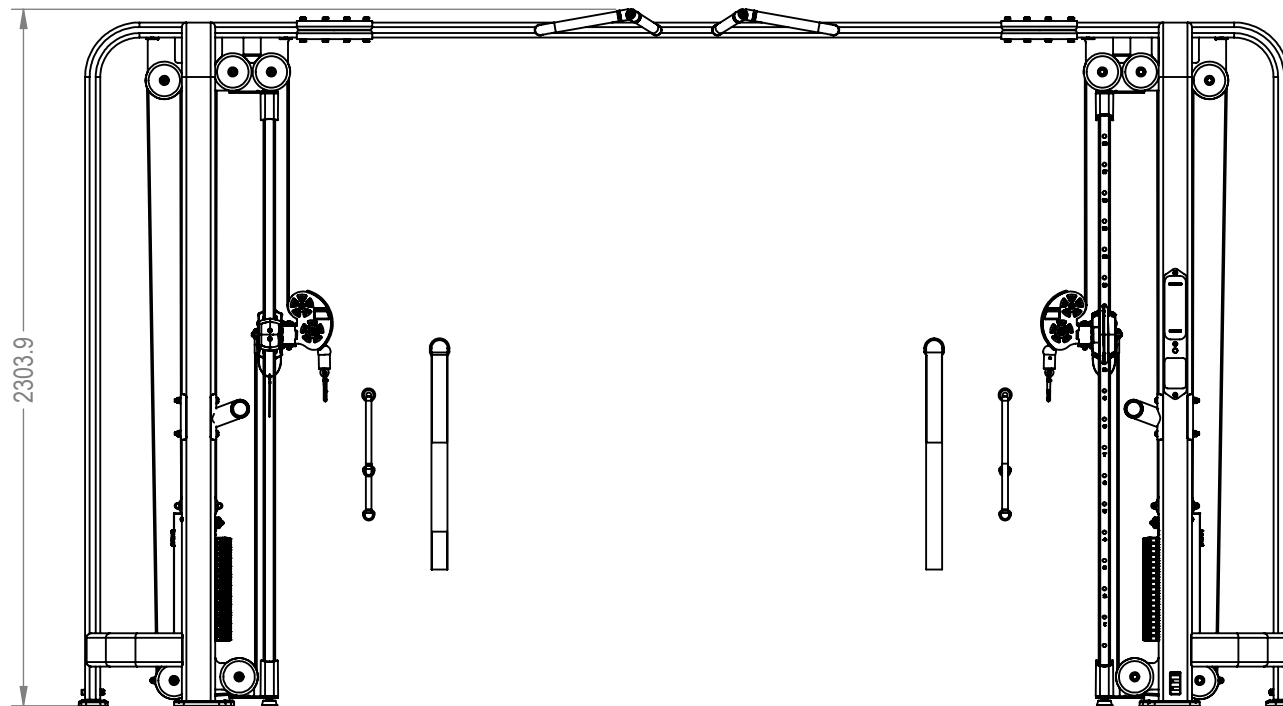
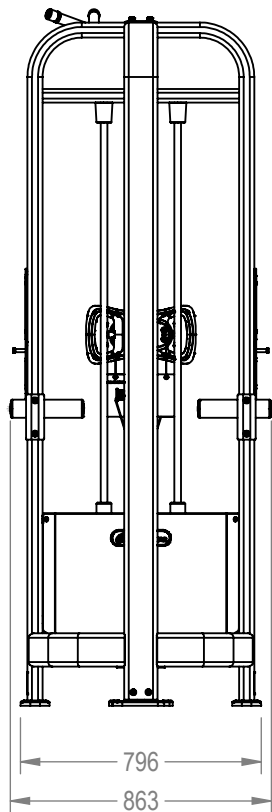
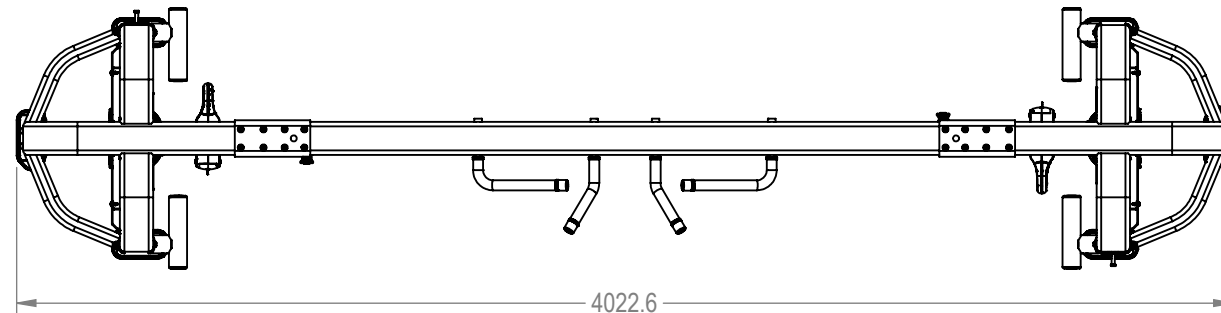
SCALE: 1:33.3	SHEET 4 OF 4	SHEET SIZE: B
---------------	--------------	---------------

9 8 7 6 5 4 3 2 1

NOTES:

1. COLOR DICTATED BY SALES ORDER. SEE SOP 622-200-103 FOR PART COLOR DESIGNATOR.
2. UNIT CONSIST OF 17 BOXES/PALLETS
3. MAKE SURE LAST 5 DIGITS OF SKU MATCH (-XXXXX)
 - a. FIRST (2) DIGITS (-XX) ARE THE MACHINE COLOR
 - b. SECOND (2) DIGITS (-XX) ARE THE COLOR OF THE UPHOLSTERY
 - c. FIFTH (5) DIGIT (-XXXXX) IS FOR CUSTOM CONFIGURATIONS.
4. ASSEMBLE AND INSPECT PER SOP 620-7918

REVISION HISTORY				
REV	DATE	DESCRIPTION	ECO	BY
A	9/23/16	DOCUMENT RELEASE	15560	RLH



NOTICE OF PROPRIETARY INFORMATION
 THIS DOCUMENT SHALL NOT BE REPRODUCED NOR SHALL THE INFORMATION CONTAINED HEREIN BE USED BY OR DISCLOSED TO OTHER EXCEPT AS EXPRESSLY AUTHORIZED BY CORE INDUSTRIES, INC., D.B.A. STAR TRAC.

**DOCUMENT STATUS:
DEVELOPMENT**

CLASS OF WORK	UNLESS OTHERWISE SPECIFIED DIMS ARE IN mm. TOLERANCES FOR MEASURE OF LENGTH ARE:							ANGLES = ±2°
	0.5 to 3	> 3 to 6	> 6 to 30	> 30 to 120	> 120 to 400	> 400 to 1000	> 1000 to 2000	
FINE	±0.05	±0.05	±0.1	±0.15	±0.2	±0.3	±0.5	----
MEDIUM X	±0.1	±0.1	±0.2	±0.3	±0.5	±0.8	±1.2	±2
COARSE	±0.2	±0.3	±0.5	±0.8	±1.2	±2	±3	±4
VERY COARSE	----	±0.5	±1	±1.5	±2.5	±4	±6	±8

MATERIAL
SEE BOM

FINISH
SEE NOTES

VENDOR: N/A

P/N: N/A

THIRD ANGLE PROJECTION



DRAWN	INITIAL RLH	DATE 9/20/16
CHECKED		
APPROVED		
	U.O.M.	MM

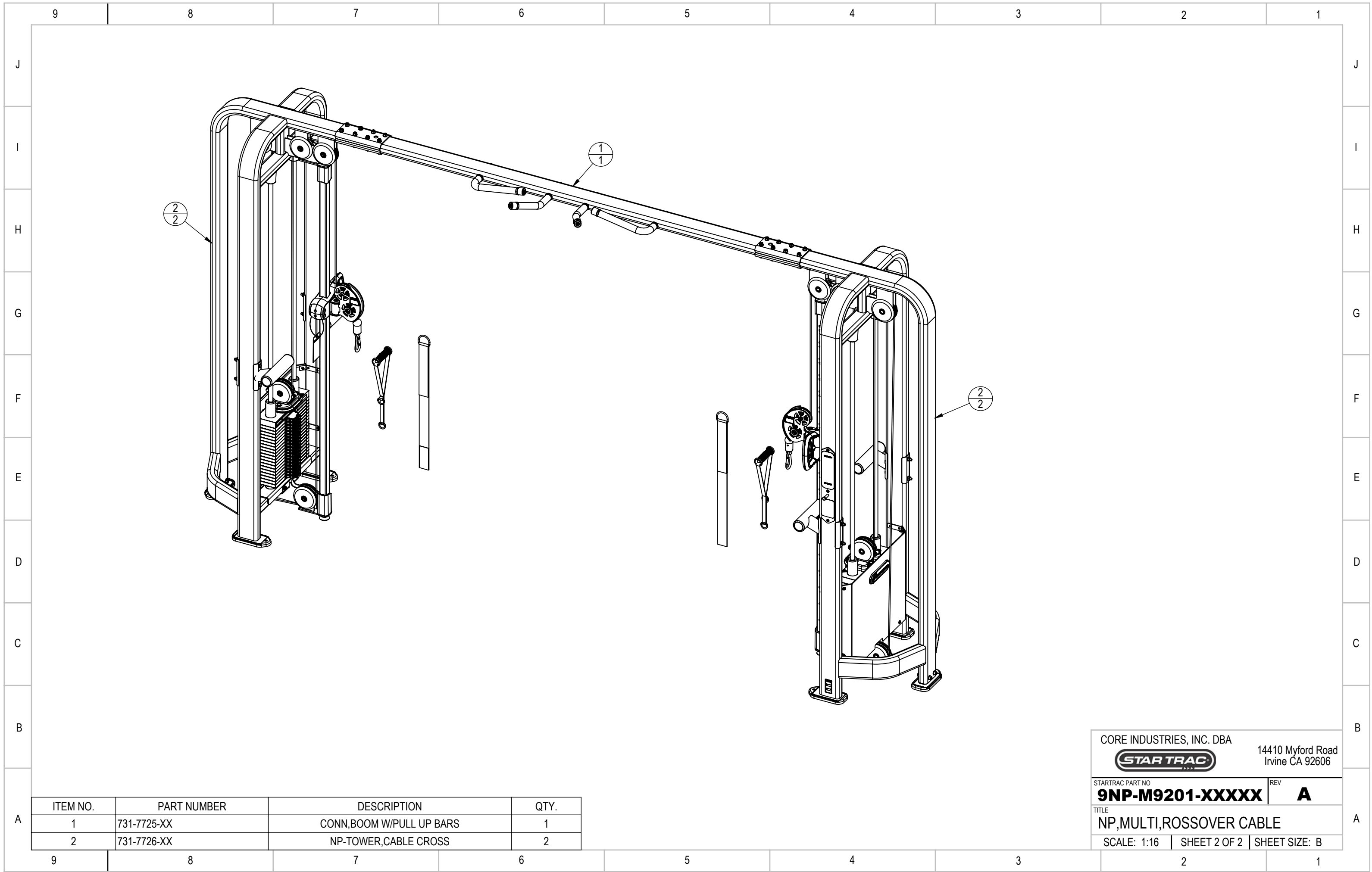
CORE INDUSTRIES, INC. DBA
 14410 Myford Road
Irvine CA 92606

STARTRAC PART NO
9NP-M9201-XXXXX REV **A**

TITLE
NP, MULTI, ROSOVER CABLE

SCALE: 1:25 | SHEET 1 OF 2 | SHEET SIZE: B

9 8 7 6 5 4 3 2 1



ITEM NO.	PART NUMBER	DESCRIPTION	QTY.
1	731-7725-XX	CONN,BOOM W/PULL UP BARS	1
2	731-7726-XX	NP-TOWER,CABLE CROSS	2

CORE INDUSTRIES, INC. DBA
STAR TRAC
 14410 Myford Road
 Irvine CA 92606

STARTRAC PART NO **9NP-M9201-XXXXX** REV **A**

TITLE
NP,MULTI,ROSSOVER CABLE

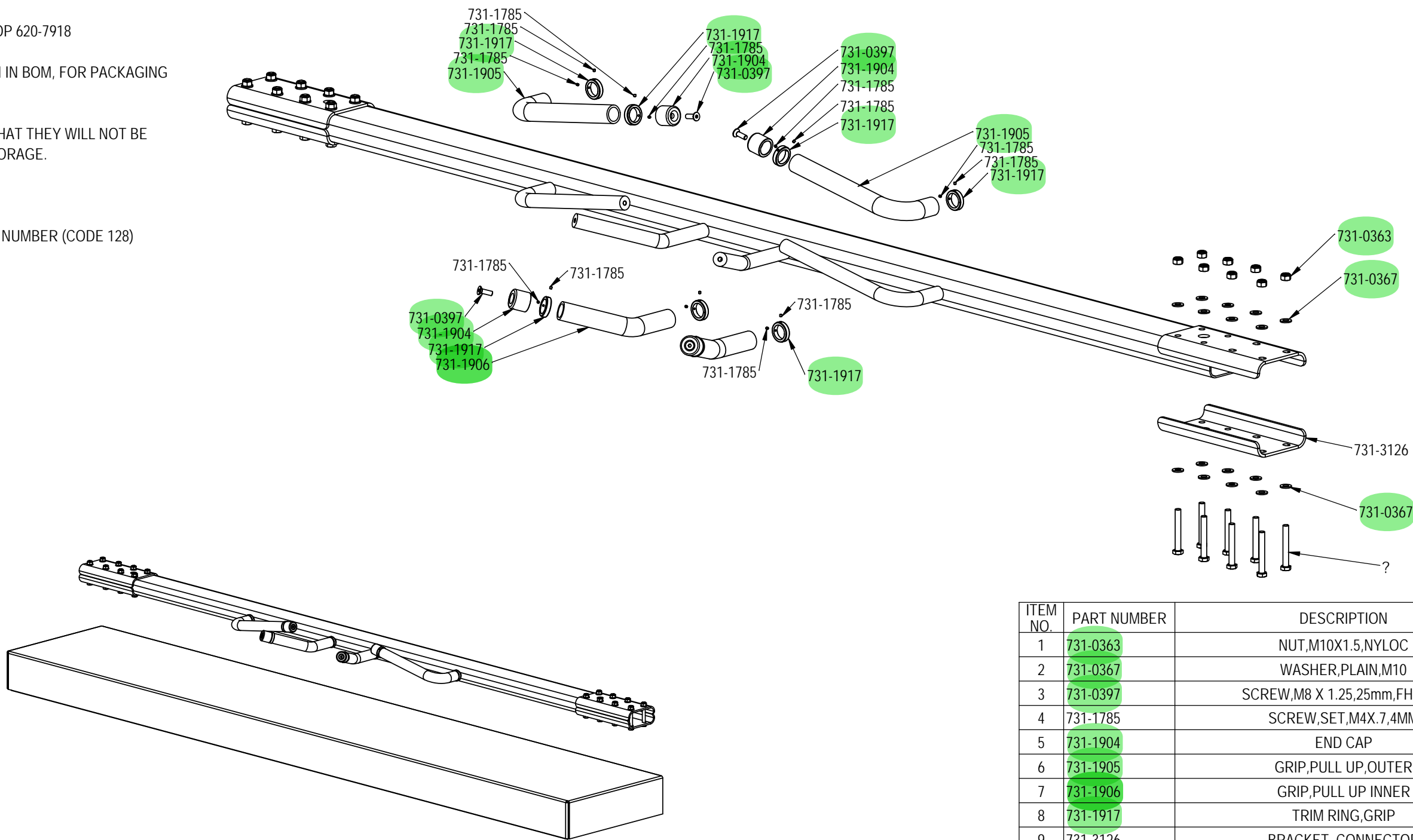
SCALE: 1:16 | SHEET 2 OF 2 | SHEET SIZE: B

NOTES:

1. COLOR DICTATED BY SALES ORDER. SEE SOP 622-200-103 FOR PART COLOR DESIGNATOR.
2. ASSEMBLE AND INSPECT PER SOP 620-7918
3. IMAGE IN NON-PACKAGED VIEW.
4. PN: 731-6004, (BOX), NOT SHOWN IN BOM, FOR PACKAGING REF. ONLY.
5. MOUNT SECURELY TO PALLET
6. PACKAGE ITEMS IN A MANNER THAT THEY WILL NOT BE DAMAGED DURING SHIPPING/STORAGE.
7. LABEL PACKAGE TO INCLUDE
 - a. PO NUMBER AND DATE
 - b. ASSEMBLY NUMBER
 - c. BAR CODE OF ASSEMBLY NUMBER (CODE 128)
 - d. ASSEMBLY DESCRIPTION
 - e. ASSEMBLY REVISION
 - f. WEIGHT (LBS / KGs)

REVISION HISTORY

REV	DATE	DESCRIPTION	ECO	BY
A	9/16/16	DOCUMENT RELEASE	15560	KY



ITEM NO.	PART NUMBER	DESCRIPTION	Default QTY.
1	731-0363	NUT,M10X1.5,NYLOC	16
2	731-0367	WASHER,PLAIN,M10	32
3	731-0397	SCREW,M8 X 1.25,25mm,FHM,HK	4
4	731-1785	SCREW,SET,M4X.7,4MM	16
5	731-1904	END CAP	4
6	731-1905	GRIP,PULL UP,OUTER	2
7	731-1906	GRIP,PULL UP INNER	2
8	731-1917	TRIM RING,GRIP	8
9	731-3126	BRACKET, CONNECTOR	2
10	731-3128-XX	WELDMENT,CHIN UP BAR	1
11	731-5516	SCREW,M10x1.5,75mm,HHC,HE,AS,12.9,ZC	16

DOCUMENT STATUS:

NOTICE OF PROPRIETARY INFORMATION
 THIS DOCUMENT SHALL NOT BE REPRODUCED NOR SHALL THE INFORMATION CONTAINED HEREIN BE USED BY OR DISCLOSED TO OTHER EXCEPT AS EXPRESSLY AUTHORIZED BY CORE HEALTH & FITNESS, LLC.

CLASS OF WORK	UNLESS OTHERWISE SPECIFIED DIMS ARE IN mm. TOLERANCES FOR MEASURE OF LENGTH ARE:							ANGLES = ±2°		
	0.5 to 3	> 3 to 6	> 6 to 30	> 30 to 120	> 120 to 400	> 400 to 1000	> 1000 to 2000	> 2000		
FINE	±0.05	±0.05	±0.1	±0.15	±0.2	±0.3	±0.5	----		
MEDIUM	±0.1	±0.1	±0.2	±0.3	±0.5	±0.8	±1.2	±2		
COARSE	±0.2	±0.3	±0.5	±0.8	±1.2	±2	±3	±4		
VERY COARSE	----	±0.5	±1	±1.5	±2.5	±4	±6	±8		

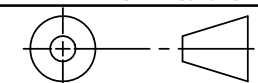
MATERIAL
SEE NOTES

FINISH
SEE NOTES

VENDOR: LAND AMERICA

P/N:

THIRD ANGLE PROJECTION



DRAWN	INITIAL KY	DATE 9/16/16
CHECKED		
APPROVED		

CORE HEALTH & FITNESS, LLC

4400 NE 77th Ave., Suite 300
 Vancouver, WA 98662

CORE PART NO: 731-7725-XX REV: A

TITLE: CONN,BOOM W/PULL UP BARS

SCALE: 1:8 SHEET 1 OF 1 SHEET SIZE: B